

Instruction Manual

for slide/pivot panel Art. No. 8-727, Art. No. 8-427

and Art. No. 8-827

(for series 700, series 750 and series 800)

Initial position:

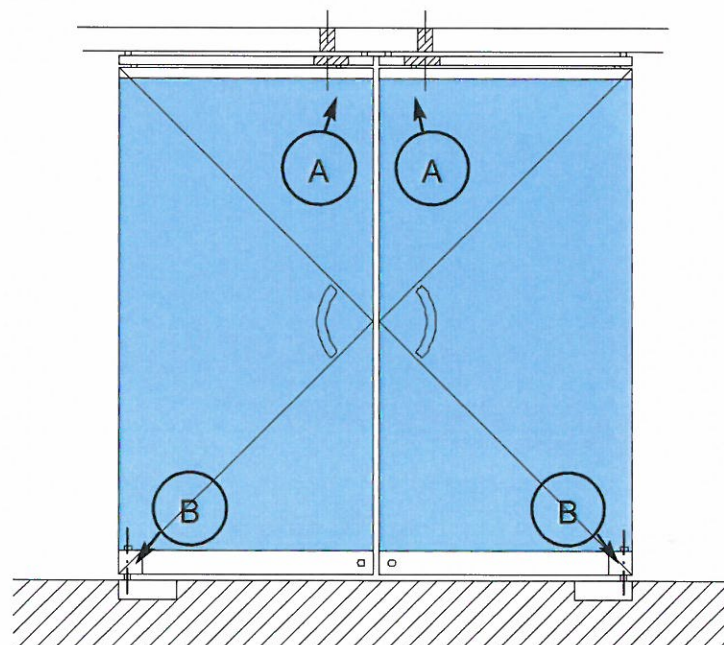
The panel is in swivel position. The panel is linked to the door floor closer by means of a square adapter (B).

- 1) The panel is not to be swiveling any more, but should be brought into sliding mode.

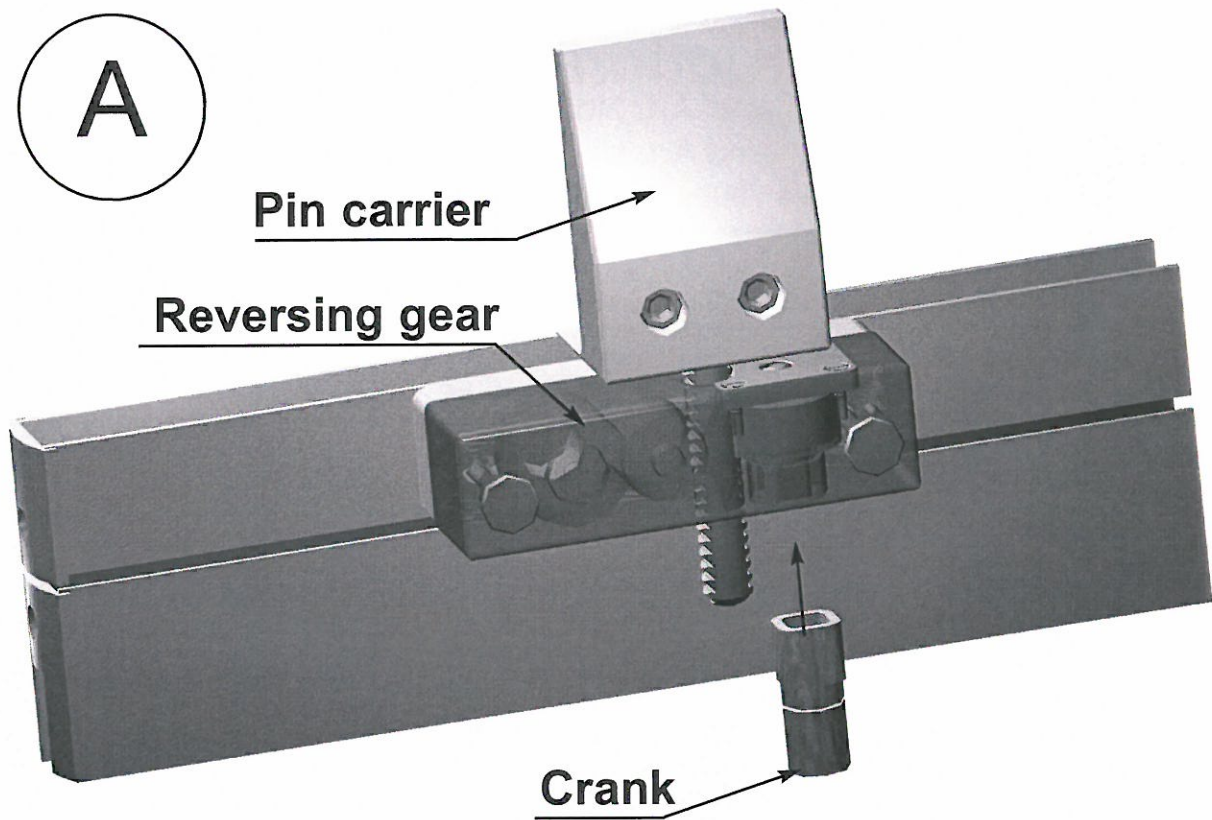
Important: panel has to be in a parallel position to the axis of the construction. If the door floor closer has been correctly installed the panel moves to this "zero position" by itself.

 - a) Clip the crank onto the square (A) at the upper gear and turn it about 8 times in clockwise direction. The bolt on the left resp. right side of the crank moves downwards out of the gear case. At the same time on the inside of the door rail, a hook from the upper part of the door rail interlocks with the lower part (invisible for the operating personnel). When feeling a slight resistance the final position is attained. The crank can be lifted again.
 - b) Clip the crank onto the square (B) positioned at the bottom side of the panel and also turn it about 8 times in clockwise direction. The panel is disconnected from the door floor closer and can be moved.

- 2) The panel is to be brought from a sliding position back to a swivel position.
 - a) Move the panel to its swinging position. The bolt sticking out of the upper gear has to be brought to a position below the center (axis) of the pin carrier of the upper rail (see illustration below). In most cases the panel is adjusted in a way as to hit a stop puffer and to attain its final position like this. **Important:** First connect the panel to the door floor closer by doing 8 rotations in **counter-clockwise direction** with the crank at the **lower part of the panel (B)**. (In the beginning a simple marking at the locking plate may be helpful, e.g. with felt-tip pen)
 - b) Clip the crank onto the square (A) at the upper gear and turn it about 8 times **in counter-clockwise direction**. The bolt on the left resp. right side of the crank moves upwards and completely disappears into the gear case. The panel is now in swinging mode.



A



B

