

## Instruction Manual

for dog slide panel Art. No. 8-730, Art. No. 8-430

and Art. No. 8-830

(for series 700, series 750 and series 800)

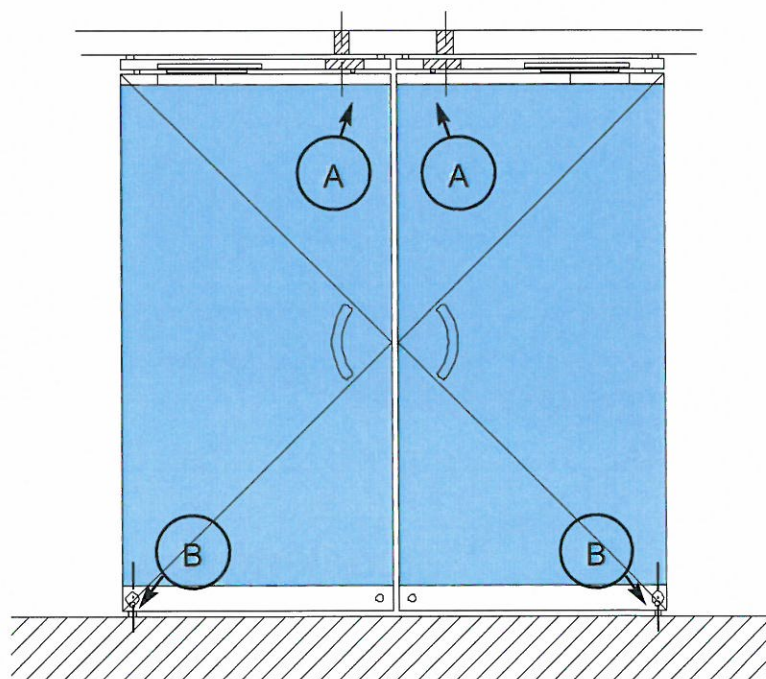
### Initial position:

The panel is in turning position; it can be opened only in one direction. The panel is linked to the door floor closer by means of a locking bolt (B) in the lower door rail.

- 1) The panel is not to be turning any more, but should be brought into sliding mode.
 

**Important:** The panel has to be in a parallel position to the axis of the construction. If the door floor closer has been correctly installed the panel moves to this "zero position" by itself and rests on the upper stop buffer.

  - a) Clip the crank onto the square (A) at the upper gear and turn it about 8 times **in clockwise direction**. The bolt on the left resp. right side of the crank moves downwards out of the gear case. At the same time on the inside of the door rail, a hook from the upper part of the door rail interlocks with the lower part (invisible for the operating personnel). When feeling a slight resistance the final position is attained. The crank can be lifted again.
  - b) Slightly pull out the locking device (B) positioned at the side of the lower door rail and move it **upwards**. Like this, the bolt is disconnected from the door floor closer and the panel can be moved.
  
- 2) The panel is to be brought from a sliding position back to a turning position.
  - a) Move the panel to its turning position. The bolt sticking out of the upper gear has to be brought to a position below the center (axis) of the pin carrier of the upper rail (see illustration below). In most cases the panel is adjusted in a way as to hit a stop puffer and to attain its final position like this. **Important:** First press down the locking device (B) positioned at the side of the lower door rail. Like this, the bolt is inserted into the door floor closer.
  - b) Clip the crank onto the square (A) at the upper gear and turn it about 8 times **in counter-clockwise direction**. The bolt on the left resp. right side of the crank moves upwards and completely disappears into the gear case. The panel is now in turning mode.



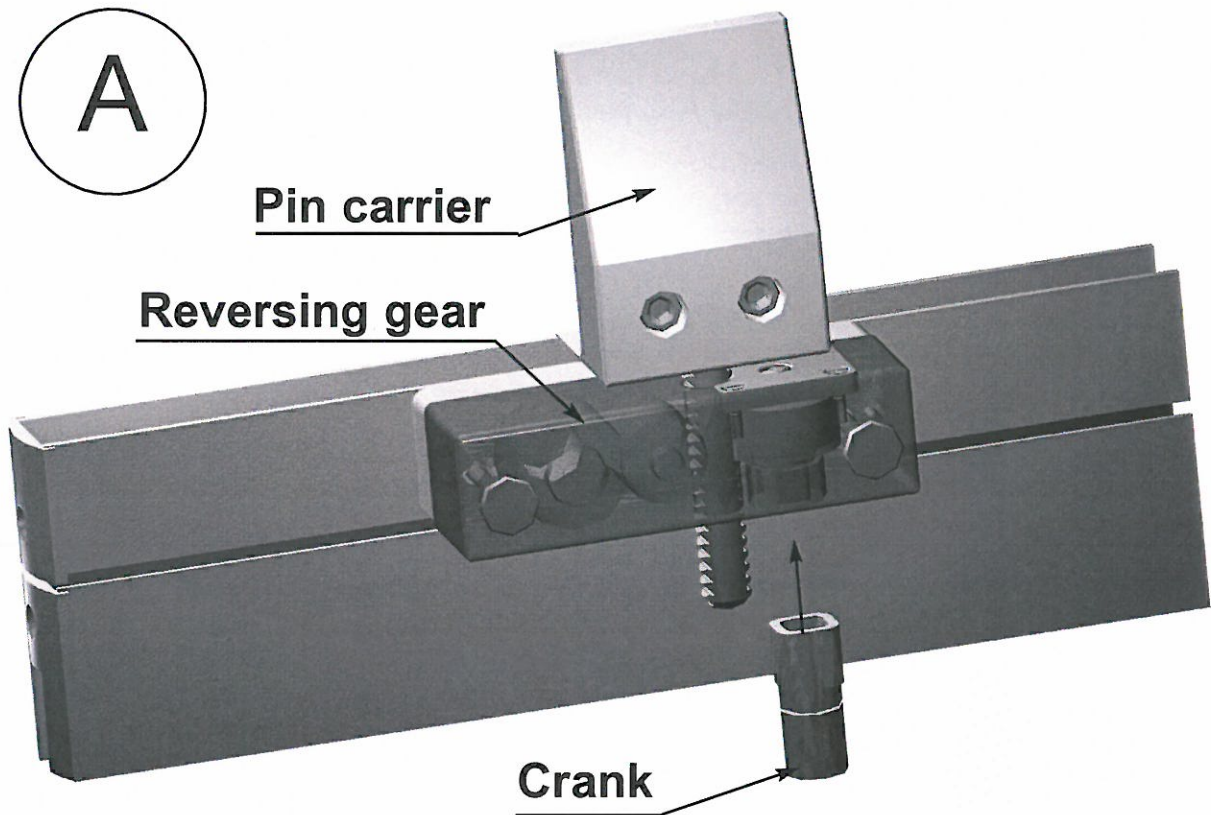
# TEUFELBESCHLAG

Wir machen Glas beweglich !

Das komplette Beschlagprogramm  
für Sicherheitsglas

The complete fittings programme  
for safety glass

A



B

